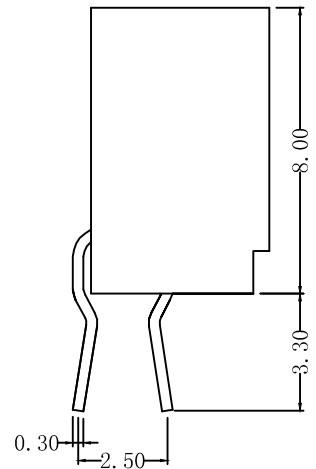
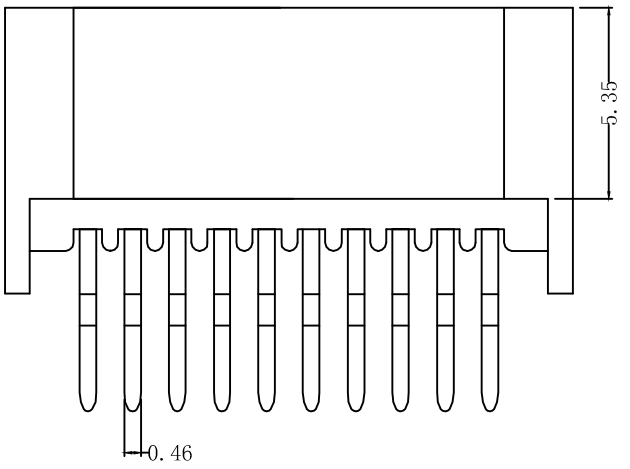
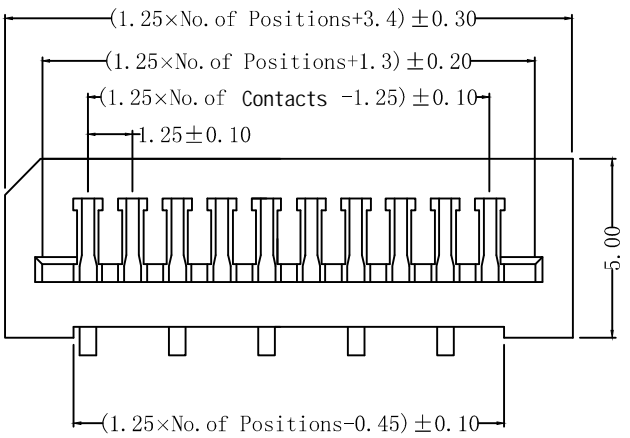
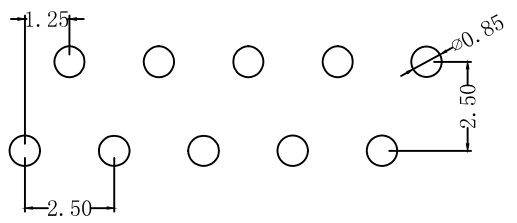


REV	DESCRIPTION	DATE



NOTE:

- MATERIAL
HOUSING: GLASS-REINFORCED THERMOPLASTIC UL 94V-0.
CONTACT: COPPER ALLOY.
PLATING: TIN PLATED OVER NICKEL.
- ELECTRICAL
CURRENT RATING: 1.0AMP.
DIELECTRIC WITHSTANDING VOLTAGE: 500V AC MIN.
INSULATION RESISTANCE: 500MΩ MIN.
CONTACT RESISTANCE: 30mΩ MAX.
- ENVIRONMENTAL
TEMPERATURE RANGE: -25°C TO 85°C.
- PART NO.
CNT-FPC125-XX-TS-S2-800



RECOMMENDED PCB LAYOUT

<p>CNT 肯耐特电子有限公司</p>			GENERAL TOLERANCE		DRAWN	DATE	DWG. NO.	TITLE
			X.° ±5°	X. ±0.30	董道丽	20191011		
REV. 1.0	UNIT mm	SCALE 1:1		.X° ±3°	.X ±0.38	CHECK	DATE	PART. NO. CNT-FPC125-XX-TS-S2-800
				.XX° ±2°	.XX ±0.25	王芳芳	20191011	
				.XXX° ±1°	.XXX ±0.15	王元中	20191011	